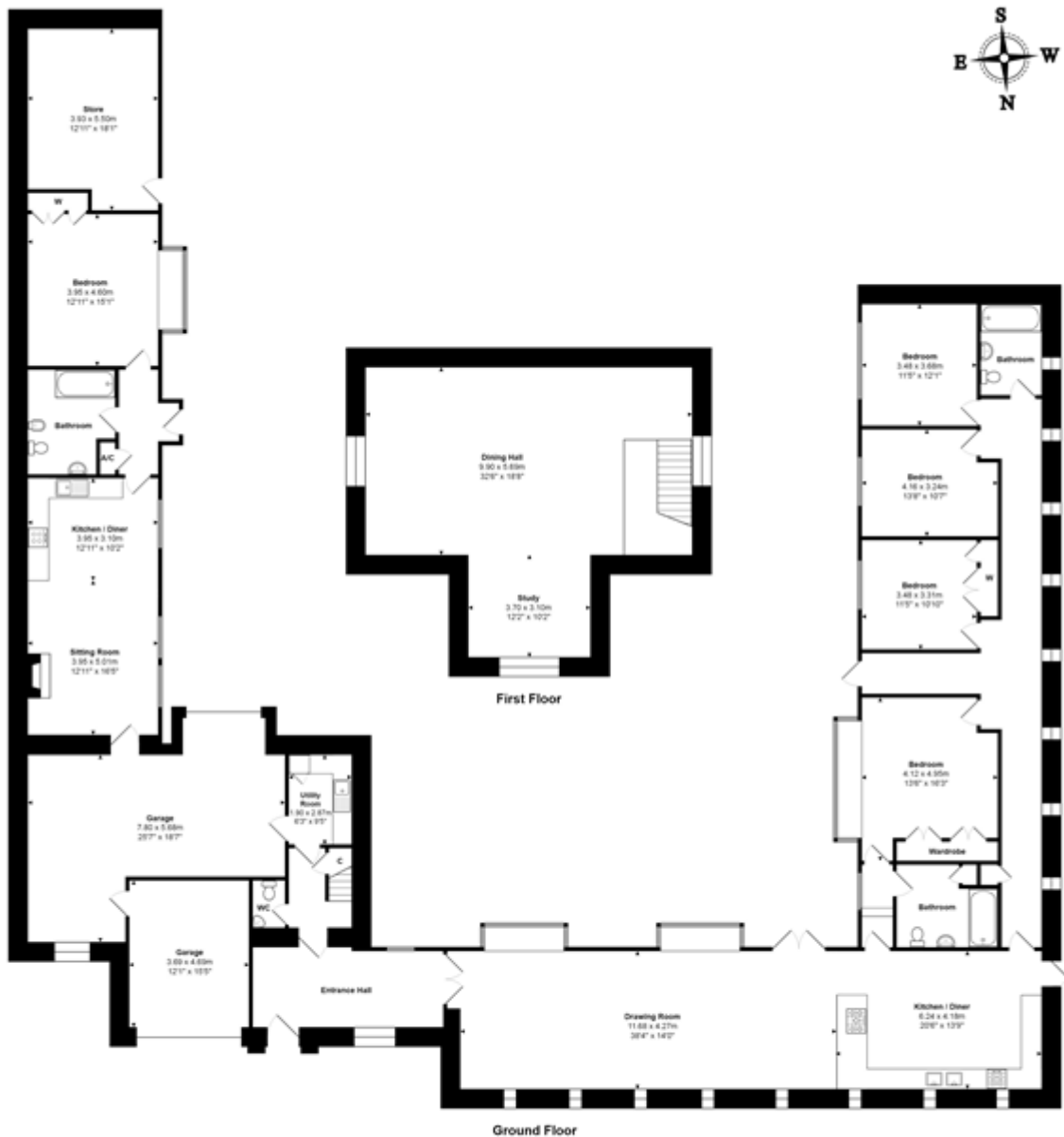


# High Street, Shipton-under-Wychwood

## Guide price £1,800,000 Freehold



Approx Gross Internal Area: 425.3 m<sup>2</sup> ... 4578 ft<sup>2</sup>

Whilst every attempt has been made to ensure the accuracy of the floor plan contained here, measurements of doors, windows, rooms, and any other items are approximate. No responsibility is taken for any error, omission, or mis-statement. The plan is for illustrative purposes only and should be used as such.  
Drawn by ES Property Services - 01845 458100

Viewings via: Penny & Sinclair, 97 High Street, Burford, Oxfordshire, OX18 4QA