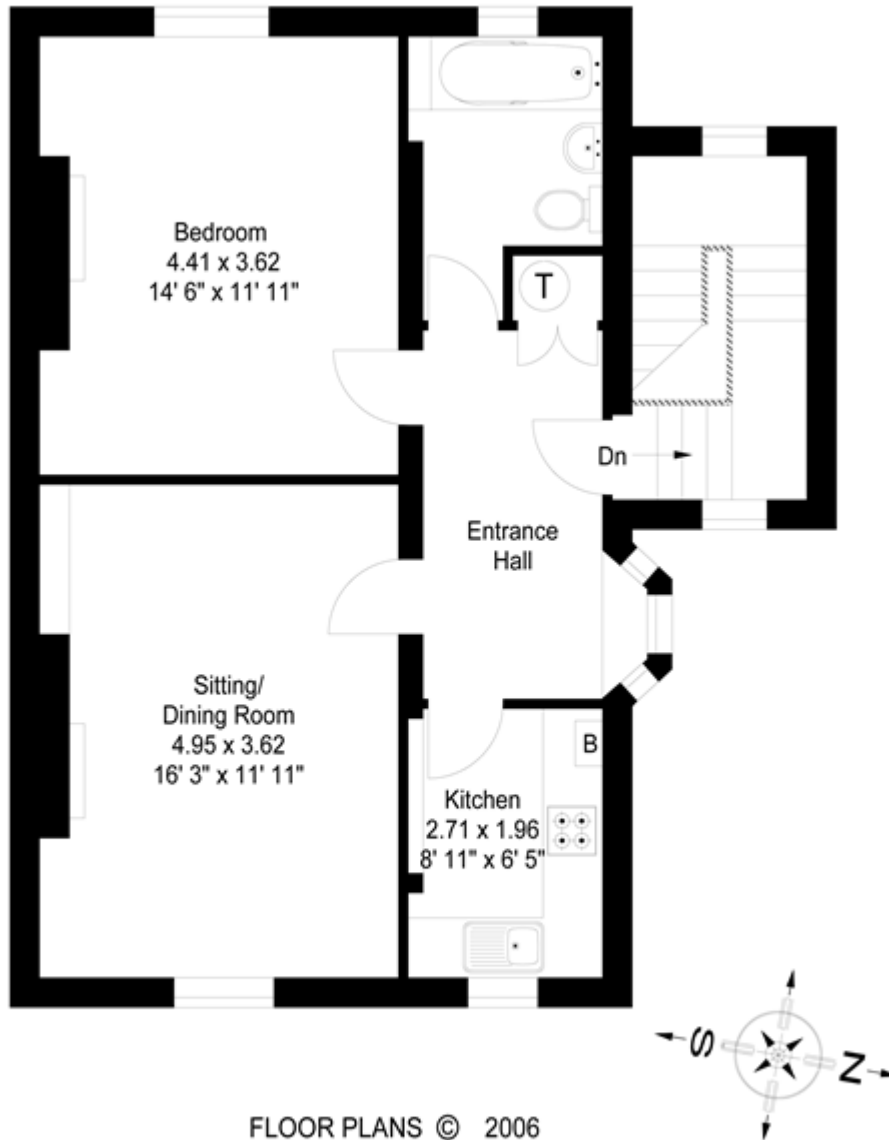


Warnborough Road, Oxford

Guide price £545,000 Freehold

Approximate Gross Internal Area :- 53 sq m / 570 sq ft



FLOOR PLANS © 2006
01483 755510 Ref 16959/TH

This illustration is for identification purposes only. Measured & drawn in accordance with RICS / PMA guidelines. Not drawn to scale, unless stated. Dimensions shown are to the nearest 7.5 cm / 3" and are through cupboard / wardrobes to wall surfaces where possible or where indicated by arrow heads. Whilst every care is taken in the preparation of this plan, please check all dimensions shapes & compass bearings before making any decisions reliant upon them.