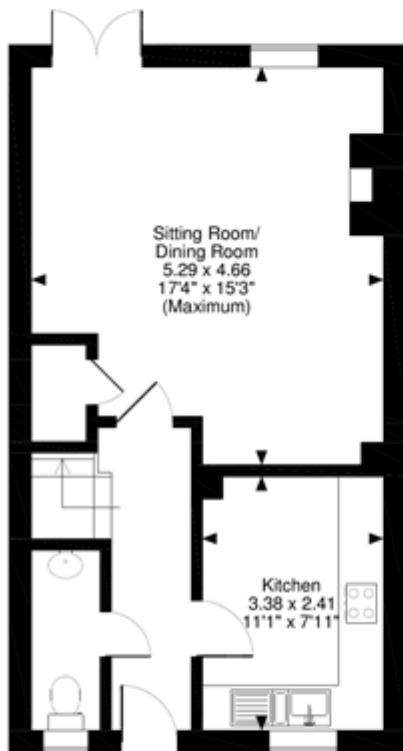
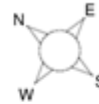


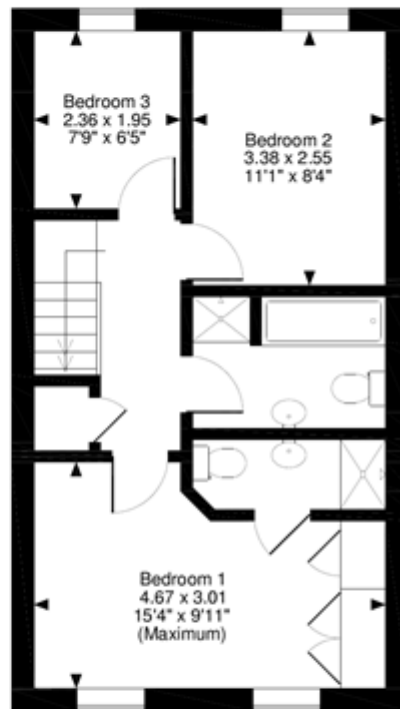
Plater Drive, Oxford

Guide price £750,000

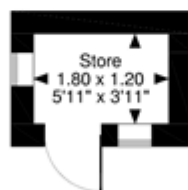
Plater Drive, Oxford
Approximate Gross Internal Area
Main House = 883 Sq Ft/82 Sq M
Store = 23 Sq Ft/2 Sq M
Total = 906 Sq Ft/84 Sq M



Ground Floor



First Floor



FOR ILLUSTRATIVE PURPOSES ONLY - NOT TO SCALE

The position & size of doors, windows, appliances and other features are approximate only.

© ehouse. Unauthorised reproduction prohibited. Drawing ref. dig/8307911/PHY