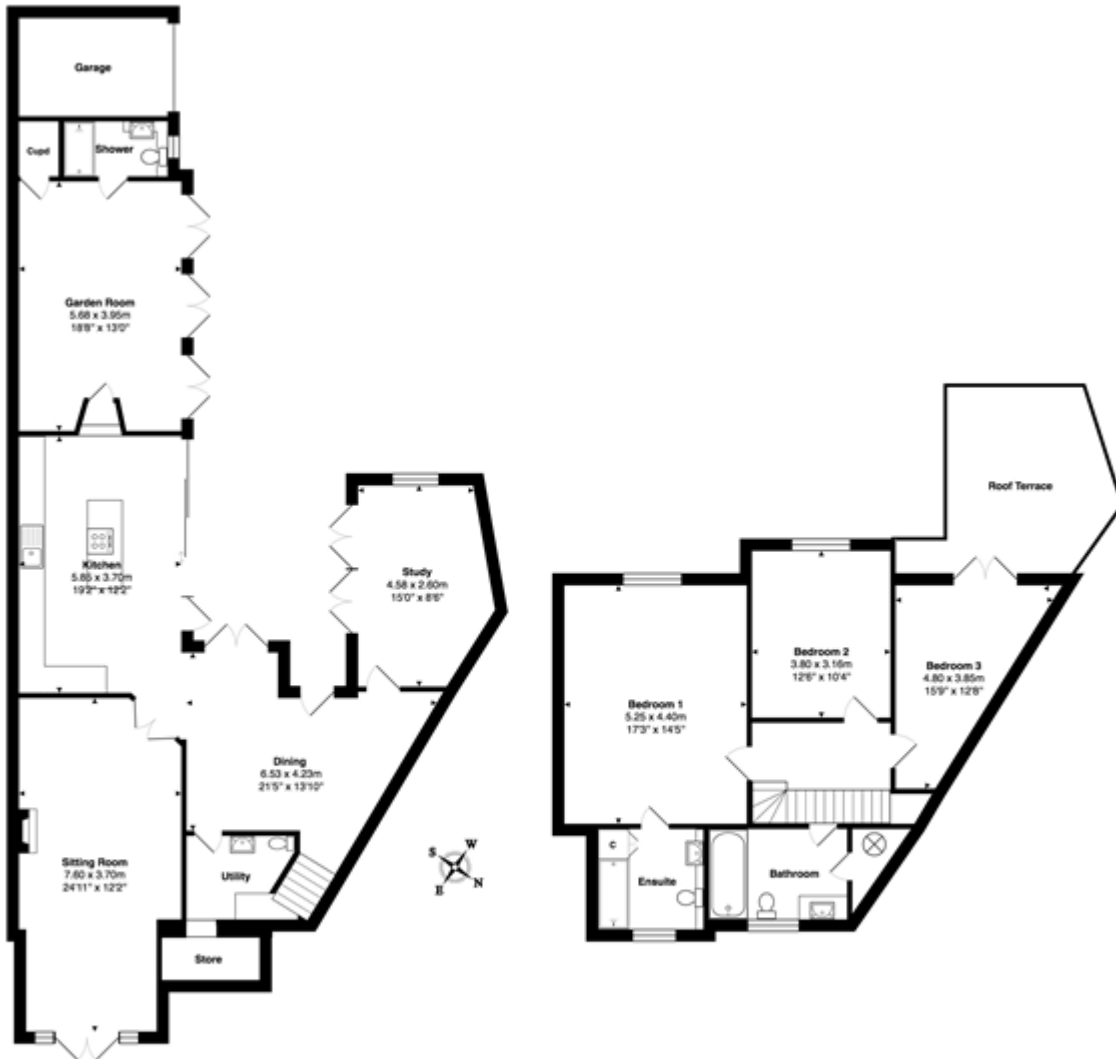


Park Town, Central North Oxford

£2,500 PW



Gross Internal Area: 193.1 m² ... 2078 ft² (excluding roof terrace)

Whilst every attempt has been made to ensure the accuracy of the floor plan contained here, measurements of doors, windows, rooms, and any other items are approximate. No responsibility is taken for any error, omission, or mis-statement. This plan is for illustrative purposes only and should be used as such. Drawn by EB Property Services. www.ebps.co.uk