

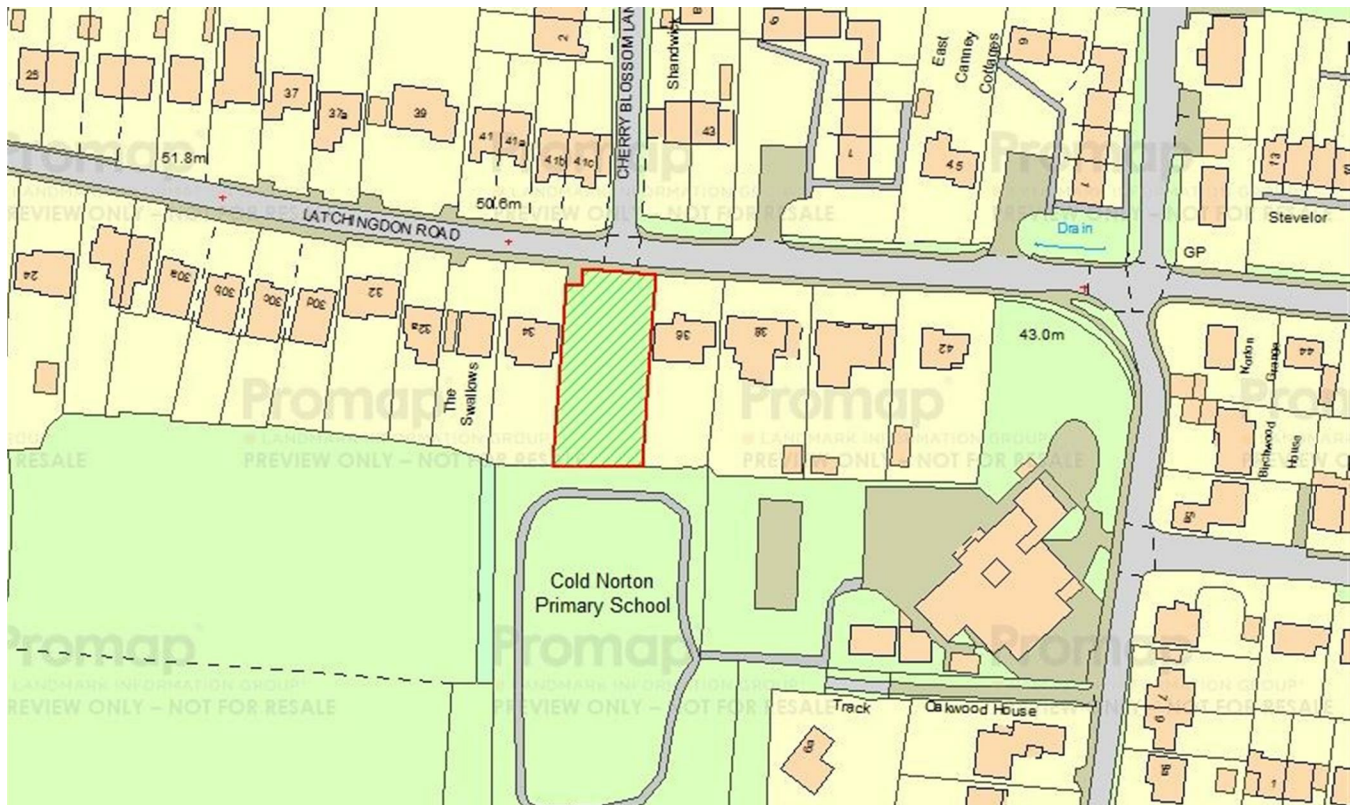
35 The Street
Latchingdon
Chelmsford
Essex
CM3 6JP

T: 01621 742 310

Bruce House
17 The Street
Hatfield Peverel
Chelmsford
CM3 2DP

T: 01245 382 555

E: info@paulmasonassociates.co.uk
www.paulmasonassociates.co.uk



The Old Fire Station, Latchingdon Road, Cold Norton, Essex, CM3 6JG

Being sold with a Guide Price £425,000 to £450,000

Paul Mason Associates are delighted to be instructed as sole agents for this development opportunity which has arisen within the heart of the sought after village of Cold Norton. The plot is approx. 0.231 acres and previously benefited from planning permission for two 4 bedroom properties application numbers 03/01223/FUL and FP/04/0123/1 which has now expired. Any potential buyer would have to make their own investigations into any future planning as the plot is being sold without planning permission. Details are available from our office in Latchingdon, please call for an appointment to discuss further.

- 0.23 acres
- Plot size 67' x 148'
- Previous planning for two 4 bedroom detached houses which has expired
- Previous planning applications 03/01223/FUL and FP/04/0123/1
- Village location
- Close to local well performing school
- 2.7 miles to train station
- 11.4 miles to Chelmsford City

