

SITE PLAN SCALE 1:200
BASED ON TOPOGRAPHICAL INFORMATION



BLOCK PLAN SCALE 1:500
PLEASE NOTE DISCREPANCY BETWEEN TOPO & O.S. INFORMATION
O.S. LICENCE NUMBER 10007080



LOCATION PLAN SCALE 1:1250
PLEASE NOTE DISCREPANCY BETWEEN TOPO & O.S. INFORMATION
O.S. LICENCE NUMBER 10007080

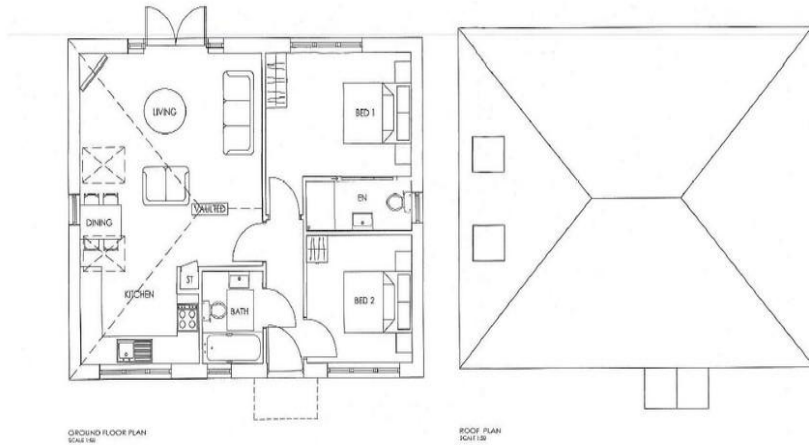
65a Sea View Road | Poole | BH12 3LR

- Two Double Bedrooms
- New Build / Detached Bungalow
- Open Plan Living Area
- UPVC Double Glazing
- Gas Central Heating
- En-Suite To Master Bedroom
- Westerly Rear Garden
- Driveway & Off Road Parking
- Due For Completion July 2018
- Early Enquiries Advised

Asking Price
£280,000

Property Summary

NEW BUILD BUNGALOW / COMPLETION DUE FOR JULY 2018 >>> Greys Land and New Homes are delighted to offer for sale this new build bungalow situated in a tucked away position and accessed via a private road off of Seaview Road in Parkstone, Poole. The property will benefit from two double bedrooms, en-suite to master bedroom, good size open plan kitchen and living area with a feature vaulted ceiling and skylights and a family bathroom. Other benefits include UPVC double glazing, gas central heating, westerly rear garden and a driveway with off road parking. For further information, please contact Greys of Parkstone.



444 Ashley Road
Poole
Dorset
BH14 0AA

www.greystateagents.co.uk
parkstone@greystateagents.co.uk
uk
01202 749390

Agents Note: Whilst every care has been taken to prepare these sales particulars, they are for guidance purposes only. All measurements are approximate and for general guidance purposes only and whilst every care has been taken to ensure their accuracy, they should not be relied upon and potential buyers are advised to recheck the measurements

%epcGraph_c_1_163%